

SMOOTH / STANDARD



barley (*)



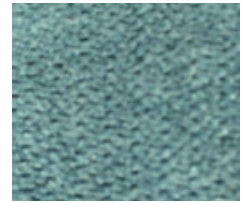
soft grey (*)



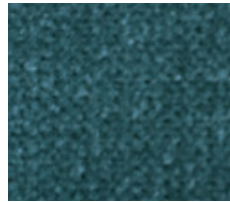
seashell (*)



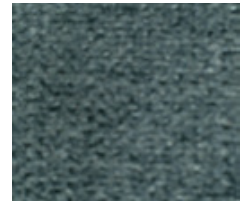
coal



crisp



denim



fog



wheat



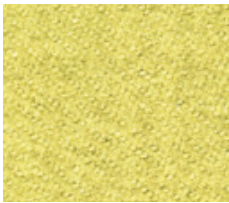
mocha (*)



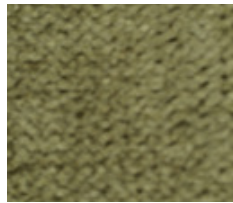
antique



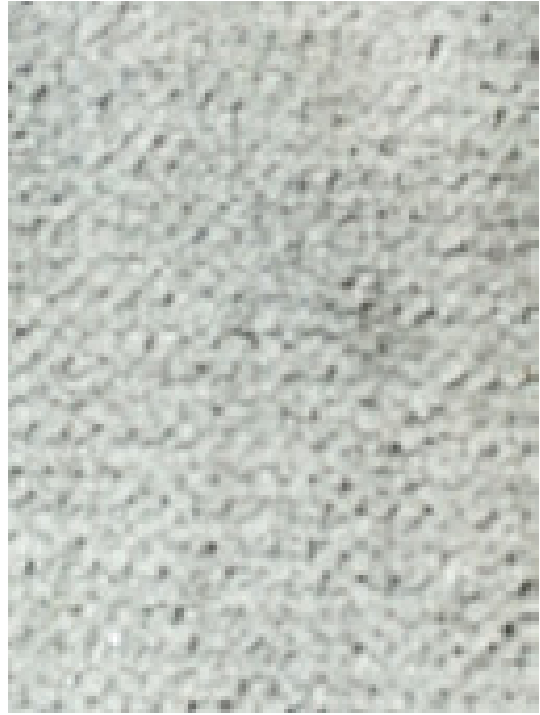
ivory (*)



lemon



chameleon



honeydew (*)

INTERIORUNLIMITED

TECHNICAL BULLETIN SMOOTH

FIBRE CONTENT:	96% POLYESTER / 4% NYLON
WEIGHT:	380 - 410 G/M
WIDTH:	140 CM / 54 INCH
ABRASION RESISTANCE:	40,000 RUBS
COLOURFASTNESS TO LIGHT	EN ISO 105 B02-2002 4
COLOURFASTNESS TO RUBBING:	EN ISO 105X12-2002 DRY/WET 3-4
TEARING STRENGTH:	EN ISO 13937-3-2000
	WARP 10.2N
	WEFT 6.4N
TENSILE STRENGTH:	ISO 13934-1-1999
	WARP 1400N
	WEFT 640N
ENVIRONMENTAL FRIENDLY:	OEKO-TEX STANDARD 100
PRICE RANGE:	STANDARD

(*) = fabric speed program

GENERAL FABRIC INFORMATION

The colour effect changes with different directions applied.
Variation in texture are inherent to the fabric.
Colours may vary slightly between dye lots.

Bigger samples are available upon request.
More colours are available upon request.

To view the fabric best hold the fabric card vertically.

WWW.INTERIORUNLIMITED.COM