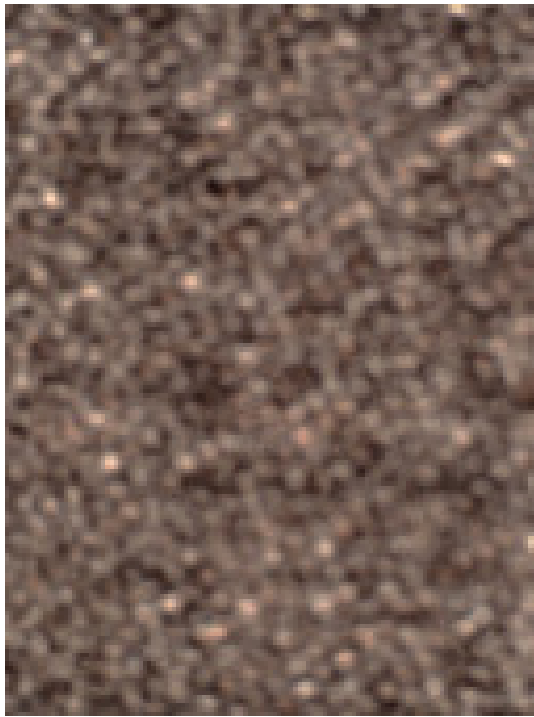


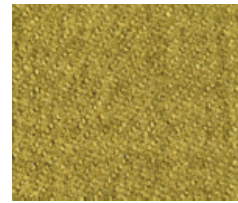
# BLEND / EXCLUSIVE



stone (\*)



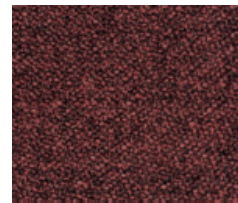
moss



lime



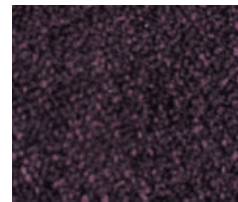
pebble (\*)



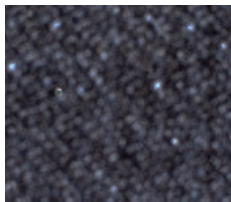
copper



passion



purple



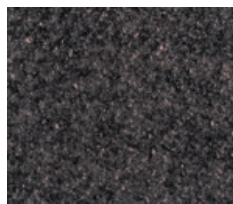
mystic



deep



sky



granite (\*)



azur



ice



montana (\*)

# INTERIORUNLIMITED

## TECHNICAL BULLETIN BLEND

FIBRE CONTENT:	100% POLYESTER
WEIGHT:	346 G
WIDTH:	142 CM / 55 INCH
ABRASION RESISTANCE:	45,000 RUBS MARTINDALE
PILLING STRENGTH:	BS5811-1986 4/5
COLOURFASTNESS TO LIGHT:	EN ISO 105-B02 5
TEARING STRENGTH:	ISO 13924-1
	WARP 34,03 NABS
	WEFT 63,48 NABS
TENSILE STRENGTH:	ISO 13934-1
	WARP 1491,23 N
	WEFT 1055,18 N
PRICE RANGE:	EXCLUSIVE

(\*) = fabric speed program

---

## GENERAL FABRIC INFORMATION

The colour effect changes with different directions applied.  
Variation in texture are inherent to the fabric.  
Colours may vary slightly between dye lots.

Bigger samples are available upon request.  
More colours are available upon request.

To view the fabric best hold the fabric card vertically.

[WWW.INTERIORUNLIMITED.COM](http://WWW.INTERIORUNLIMITED.COM)